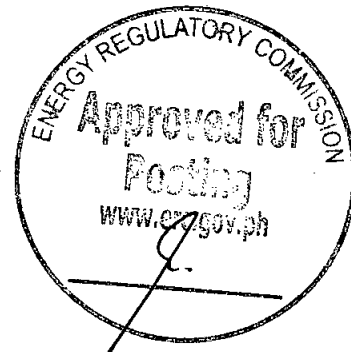


Republic of the Philippines  
**ENERGY REGULATORY COMMISSION**  
San Miguel Avenue, Pasig City



**IN THE MATTER OF THE APPLICATION FOR AUTHORITY TO DEVELOP, OWN AND/OR OPERATE DEDICATED POINT-TO-POINT FACILITIES TO CONNECT THE ATIMONAN ONE ENERGY COAL-FIRED POWER PLANT TO THE NEW PAGBILAO SUBSTATION OF THE NATIONAL GRID CORPORATION OF THE PHILIPPINES (NGCP) WITH PRAYER FOR PROVISIONAL AUTHORITY**

**ERC CASE NO. 2016-013 MC**

**ATIMONAN ONE ENERGY, INC. (A1E),**

**Applicant .**

X -----X

**D O C K E T E D**  
Date: OCT. 21 2016  
By: [Signature]

**NOTICE OF PUBLIC HEARING**

**TO ALL INTERESTED PARTIES:**

On 19 May 2016, Atimonan One Energy, Inc. (A1E) filed an application for authority to develop, own, and/or operate dedicated point-to-point limited transmission facilities to connect the Atimonan One Energy Coal - Fired Power Plant to the New Pagbilao Substation of the National Grid Corporation of the Philippines (NGCP), with prayer for the issuance of provisional authority.

In support of the said application, A1E alleged the following:

**THE APPLICANT**

1. A1E is a corporation duly organized and existing under and by virtue of the laws of the Republic of the Philippines with office address at 8<sup>th</sup> Floor Rockwell Business Center Tower 1, Ortigas Avenue, Pasig City.

A copy of A1E's Certificate of Incorporation, Articles of Incorporation, Certificate of Filing of Amended Articles of Incorporation, Amended Articles of Incorporation, By-Laws, General Information Sheet, and latest audited financial statement are hereto attached and made integral parts hereof as **Annexes "A," "B," "C", "D," "E," "F," and "G,"** respectively.

2. A1E may be served with orders and other processes of this Honorable Commission through the undersigned counsel.

**NATURE OF THE APPLICATION**

3. This Application is submitted to this Honorable Commission pursuant to Section 9(f) of Republic Act No. 9136, or the Electric Power Industry Reform Act of 2001 ("**EPIRA**")<sup>1</sup>, Rule 5, Section 5 (a)(i)<sup>2</sup> of the EPIRA Implementing Rules and Regulations, and Section 4.2 of Resolution No. 16 Series of 2011, or the Resolution Adopting the Amended Rules on the Definition and Boundaries of Connection Assets for Customers of Transmission Provider<sup>3</sup> for its consideration

---

<sup>1</sup> "Section 9. Functions and Responsibilities.

xxx

(f) xxx

A generation company may develop and own or operate dedicated point-to-point limited transmission facilities that are consistent with the TDP: Provided, That such facilities are required only for the purpose of connecting to the transmission system, and are used solely by the generating facility, subject to prior authorization by the ERC: xxx

<sup>2</sup> Section 5. Dedicated Point-to-Point Limited Transmission Facility of a Generation Company.

- (a) Subject to prior authorization from ERC, TRANSCO or its Buyer or Concessionaire may allow a Generation Company to develop, own and/or operate dedicated point-to-point limited transmission facilities; *Provided*, That:

- (i) Such dedicated point-to-point limited transmission facilities are required only for the purpose of connecting to the Grid which will be used solely by the Generation Facility, and are not used to serve End-users or Suppliers directly;"

<sup>3</sup> Section 4.2. Connection Assets for Generation Customers of Transmission Provider

"Connection Assets for Generation Customers of Transmission Provider include those assets from the last Single Mechanical Connection of a User System or Equipment of a Generator, at its Connection Point, to the last Single Mechanical Connection which is not shared with another Generator within the Grid.

xxx

and approval of A1E's proposed development, construction, ownership and/or operation of an approximately twenty three (23) kilometers, 500 kV, bundle of four (4), 795 MCM ACSR conductor, double circuit, steel tower transmission line (the "**Dedicated Transmission Facility Project**") which shall connect A1E's 2x600 MW Coal-Fired Power Plant (the "**A1E CFPP**") to the 500 kV Switchyard of the New Pagbilao Substation of the National Grid Corporation of the Philippines ("**NGCP**").

**STATEMENT OF FACTS**

4. A1E was originally incorporated as the Luzon Natural Gas Energy Corporation on 11 January 2013 until the amendment of its corporate name on 8 October 2014 to Atimonan One Energy, Inc. (earlier defined as "**A1E**").
5. Under its Articles of Incorporation, as amended, A1E's primary corporate purpose is *"to develop, design, acquire, build, construct, erect, assemble, commission, install, own, maintain, operate, rehabilitate and manage all necessary and convenient facilities, plants, buildings, structures, equipment, machineries, sub-stations, transmission lines, poles, wires, and other properties used in the generation, delivery and/or transmission of electricity, including but not limited to natural gas-fired power generating plants, gas receiving terminal, regasification facility, gas-turbine and other plants and facilities used in connection therewith; and to carry on the general business of generation, delivery and/or transmission of electric energy and other sources for lighting and power purposes and wholesale of electricity to power companies, distribution utility companies, electric cooperatives, retail electricity suppliers, aggregators, and other customers to such extent, and in such manner as may be permitted by applicable law and regulations; and to enter into contracts either alone or jointly with other companies or persons for the purpose of carrying out the foregoing."*
6. In consonance with the foregoing purpose, the A1E CFPP involves the development, construction, operation, and maintenance of a 2x600 Megawatt ("**MW**") Coal-Fired Power Plant located in Brgy. Villa Ibaba, Atimonan, Quezon Province. The project entails the construction of two (2) high-efficiency 600 MW units for a total net generating capacity of 1200 MW and which is projected for completion by 2021.

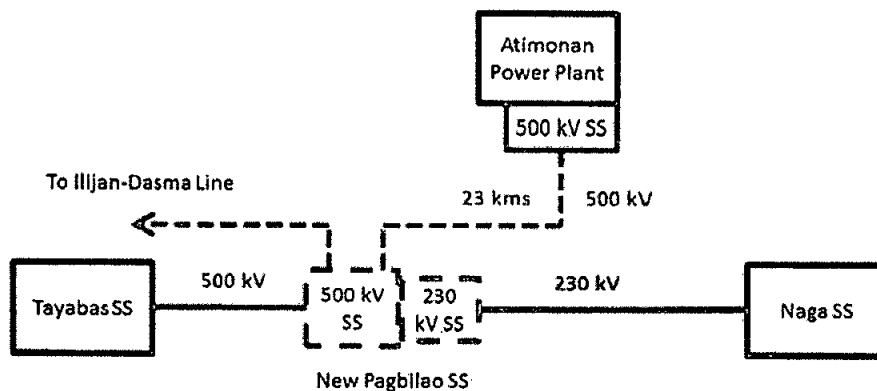
---

"A generation company may develop and own or operate dedicated point-to-point limited facilities provided, that such facilities are required only for the purpose of connecting to the transmission system, and are used solely by the generating facility, subject to prior authorization by the ERC."

**ERC CASE NO. 2016-013 MC**  
**NOTICE OF PUBLIC HEARING/ 18 October 2016**  
**Page 4 of 13**

---

7. In accordance with the agreed connection scheme with the NGCP, the A1E CFPP will directly connect through the Dedicated Transmission Facility Project to the 500 kV Switchyard of the New Pagbilao Substation which the NGCP will construct.
8. As agreed with NGCP, the A1E CFPP will be connected to the NGCP's Luzon Grid through the construction of a 500 kV Radial Connection to the New Pagbilao Substation. This proposed project, subject of the instant Application, involves the construction of a Dedicated Transmission Facility Project which is a twenty three (23) kilometer, 500 kV, bundle of four (4), 795 MCM ACSR conductor, double circuit, steel tower transmission line.
9. The configuration of this connection is shown as follows:



10. The Dedicated Transmission Facility Project is required only for the purpose of connecting the A1E CFPP to the New Pagbilao Substation of NGCP and will be used solely by the A1E CFPP.

A more detailed description of the Dedicated Transmission Facility Project is hereto attached and made an integral part hereof as **Annex "H."**

11. On January 2015, EAGLEngineering Solutions Corporation ("**ESC**") performed a System Impact Study ("**SIS**") to determine the impact of connecting the A1E CFPP to NGCP's transmission system. The SIS recommended the interconnection of A1E CFPP via a radial connection to the NGCP's New Pagbilao Substation.
12. Three (3) connection schemes were considered for the interconnection of the CFPP to the Grid, namely:
  - 12.1. A 500 kV Radial Connection to NGCP's New Pagbilao Substation ("**Option A**");
  - 12.2. A Bus-In connection between New Pagbilao-Naga Transmission Line with lines going to the New

**ERC CASE NO. 2016-013 MC**  
**NOTICE OF PUBLIC HEARING/ 18 October 2016**  
**Page 5 of 13**

---

Pagbilao Substation at 500 kV and lines going to the Naga Substation at 230 kV (“**Option B**”); and

- 12.3. A Bus-In connection between Tayabas – Naga Transmission line with lines going to the Tayabas Substation at 500 kV and lines going to the Naga Substation at 230 kV (“**Option C**”) as an interim connection only.
- 12.4. With respect to Option A, it was found that this option is best if the NGCP decides to construct the New Pagbilao Substation at 500 kV and 230 kV. The configuration for this option was shown above.<sup>4</sup>

---

<sup>4</sup> See page 19 of the System Impact Study of 2 x 600 MW Coal-Fired Power Plant of Atimonan One Energy, Inc. (A1E) dated January 2015. Likewise, see page 13 of the NGCP SIS Review Report which provides as follows:

*Recommended Connection Scheme – Option A*

The conducted System Impact Study captures the NGCP’s recommended connection scheme and grid reinforcement as indicated in “Option A. Radial connection to NGCP’s New Pagbilao substation” for the interconnection of the 2x600 MW Atimonan Coal-Fire Power Plant together with the committed and other proposed power plants in Quezon province. As mentioned in the discussions of Option A page 18 of the SIS report, “This option is intended if NGCP decides to construct the New Pagbilao Substation at 500 kV and 230 kV.”

The entry of the 2x600 MW A1ECFPP will involve the construction of a 23-km double circuit 500 kV line composed of 795 MCM ACSR conductors (bundle of four) on steel towers that will radially connect the A1ECFPP to the 500 kV switchyard of the New Pagbilao substation.

To reduce the power merging at the Tayabas 500 kV Substation, the 500 kV lines going to Ilijan and Dasmarias will be terminated at the New Pagbilao 500 kV substation by constructing a 17-km double-circuit 500 kV (4-795 MCM ACSR) line extension. This scheme will reduce the criticality of the Tayabas 500 kV substation and will improve grid security and at the same time will provide room to accommodate other future generation capacity additions in the area.

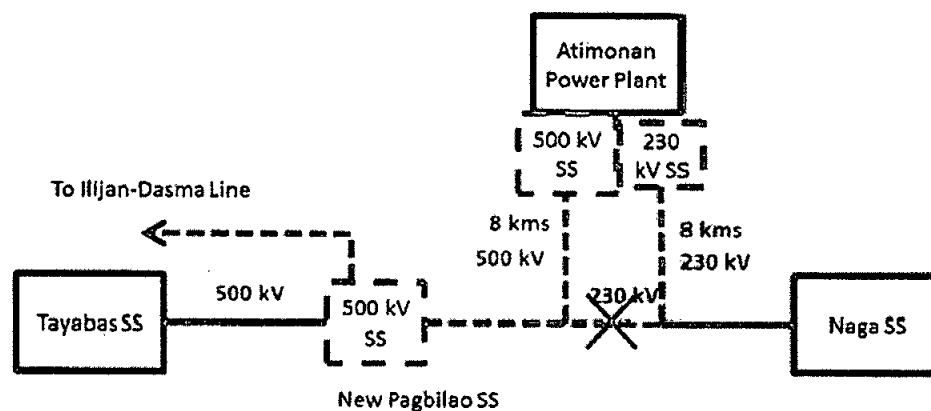
The potential constraint during N-1 contingency at the Taguig-Paco 230 kV corridor within Metro Manila was also identified. The constraint is imminent when the existing and all the incoming power plants including the A1ECFPP in South Luzon, are at simultaneous dispatch. This problem will be addressed by the proposed Metro Manila backbone development project of NGCP.

As regards the voltage assessment, no issues have been identified as a result of the connection of A1ECFPP.

Using the network model provided by NGCP, the proposed power plant will contribute to the increase in the levels of fault current in nearby buses but is not significant to initiate upgrading of the existing power circuit breakers.

Transient stability simulation results show that with the New Pagbilao 500/230 kV substation constructed to cater the connection of A1ECFPP together with the other power plants in Quezon area, the system will remain stable and were able to regain synchronism for short circuit events that were cleared under normal and delayed fault clearing. During peak load scenario, only the outage of both two (2) 600 MW units of A1ECFPP will cause the frequency to drop causing activation of an ALD (Automatic Load Dropping) relay. Furthermore, during off-peak load scenario, outage of one 600 MW unit will already cause a frequency drop ALD activation is expected.

12.5. With regard to Option B, this is preferred if the NGCP decides to construct the New Pagbilao Substation as a 500 kV substation. The connection facility will consist of 500 kV transmission line (8 km, 500 kV bundle of four (4), 795 MCM ACSR conductor, double circuit, steel towers). The New Pagbilao – Naga transmission line will be split at the tapping point so that the 500 kV Substation and the 230 kV line from the power plant to connect directly to the Naga Substation side of the New Pagbilao – Naga line.<sup>5</sup> The following figure shows the configuration of this connection option:<sup>6</sup>



12.6. As per the SIS, Option C is preferred if the NGCP does not construct the New Pagbilao Substation or as an interim connection if the A1E CFPP gets completed before the New Pagbilao Substation. The connection facility under this option will consist of a 500 kV transmission line and 230 kV transmission line. As with Option 2, under this option, the New Pagbilao – Naga transmission line will be split at the tapping point so that the 500 kV line from the A1E CFPP will connect directly to the Tayabas Substation side of the Naga – Tayabas line and the 230 kV line from the A1E CFPP to connect directly to the Naga Substation side. A 500/230 kV transformer must be installed to link both voltage levels.<sup>7</sup> The following is the configuration for this connection option:<sup>8</sup>

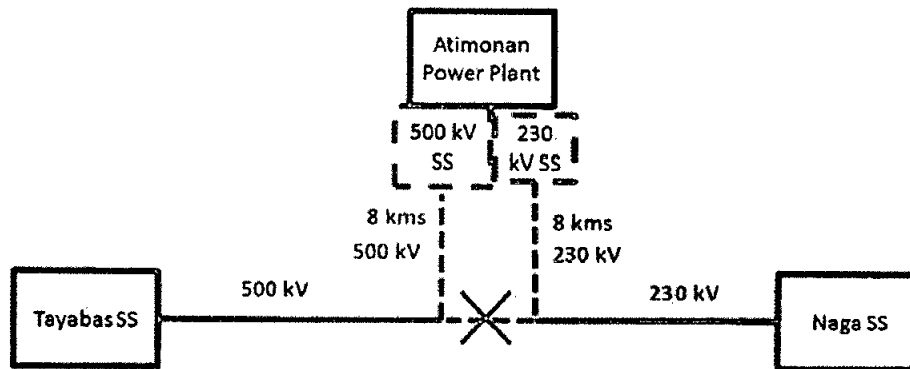
---

<sup>5</sup> See page 19 of the System Impact Study of 2 x 600 MW Coal-Fired Power Plant of Atimonan One Energy, Inc. (A1E) dated January 2015.

<sup>6</sup> *Id.*

<sup>7</sup> See page 20 of the System Impact Study of 2 x 600 MW Coal-Fired Power Plant of Atimonan One Energy, Inc. (A1E) dated January 2015

<sup>8</sup> *Id.*



13. The SIS of ESC was submitted for evaluation to NGCP, which issued a Review of Third Party System Impact Study (“RTSIS”) in May 2015. In Section 2.3 of the said RTSIS, NGCP stated in part:

**“2.3 Recommended Connection Scheme – Option A**

The conducted System Impact Study captures the NGCP’s recommended connection scheme and grid reinforcement as indicated in ‘Option A. Radial connection to NGCP’s New Pagbilao substation’ for the interconnection of the 2x600 MW Atimonan Coal-Fired Power Plant together with the committed and other proposed power plants in Quezon province. As mentioned in the discussions of Option A page 18 of the SIS report, “This option is intended if NGCP decides to construct the New Pagbilao Substation at 500 kV and 230 kV.”

A detailed discussion of the foregoing is provided in the SIS, a copy of which is hereto attached and made an integral part hereof as **Annex “I.”** A copy of the RTSIS is hereto attached and made an integral part hereof as **Annex “J.”** A summary of the Connection Options of A1E are attached hereto and made an integral part hereof as **Annex “K.”**

14. It is well to note that the NGCP has already filed with this Honorable Commission an Application for the New Pagbilao Substation entitled “In the Matter of the Application for the Approval of the Pagbilao EHV Substation Project with Prayer for the Issuance of a Provisional Authority,” docketed as ERC Case No. 2015-078 RC. In the said Application, the NGCP specifically stated in part:

“5. Four (4) new power plants will be constructed in the Quezon province starting 2015, namely:

- a. 420 MW Pagbilao CFPP Expansion;
- b. 500 MW San Buenventura Power Ltd.

**ERC CASE NO. 2016-013 MC**  
**NOTICE OF PUBLIC HEARING/ 18 October 2016**  
**Page 8 of 13**

---

- Co. (SBPL) CFPP;
- c. 3X200 MW Energy World Corporation (EWC) Combined-Cycle Power Plant (CCPP); and
- d. 1,200MW Atimonan CFPP.

6. These incoming power will have a total capacity of **2,720MW**. However, the existing transmission facility at the Tayabas 500/230 kV Substation cannot accommodate this additional capacity. **Thus, NGCP proposes the implementation of the proposed Project in order to accommodate the incoming power plants.** (Emphasis ours.)

15. In a Letter dated 25 August 2015, NGCP informed A1E that it was technically feasible to connect the CFPP to the Luzon Grid. The Facilities Study on the Dedicated Transmission Facility Project was subsequently approved by the NGCP as evidenced by its letter dated 11 March 2016.

A copy of the Letter dated 25 August 2015 is hereto attached and made an integral part hereof as **Annex "L."** The letter from the NGCP dated 11 March 2016 approving the Facilities Study for the Dedicated Transmission Facility Project is likewise attached and made an integral part hereof as **Annex "M."**

16. Based on the 2014-2015 Transmission Development Plan ("**TDP**") of NGCP, the A1E CFPP is included in the List of Luzon Generation Capacity Addition<sup>9</sup> and is considered in the Proposed Transmission Projects for 2016-2025.<sup>10</sup>

A copy of the 2014-2015 TDP are hereto attached and made an integral part hereof as **Annex "N."**<sup>11</sup>

17. The estimated cost of the transmission line reflected in the total capital investment, based on a twenty-three (23) kilometer transmission line, is equivalent to PhP1,706,681,095.58. It should be emphasized that the switchyard on the high side portion of the Dedicated Transmission Facility Project is owned by A1E.

A copy of the Project Cost Estimates is hereto attached and made an integral part hereof as **Annex "O."** A copy of the Projected Financial and Economic Cost Analysis of the A1E CFPP is attached hereto and made an integral part hereof as **Annex "P."**

18. A1E has a proposed timeline for the completion of the Dedicated Transmission Facility Project. A copy of the Gantt

---

<sup>9</sup> See page 24 of the TDP.

<sup>10</sup> See page 57 of the TDP.

<sup>11</sup> With the relevant page 56 tabbed for ease of reference.



Chart illustrating such timeline is hereto attached and made an integral part hereof as **Annex "Q."** A copy of the Conceptual Engineering Design and Drawings are hereto attached and made an integral part hereof as **Annex "R."**

19. A1E has likewise submitted an Application with the Department of Environment and Natural Resources ("**DENR**"), through its internet based tool, for the issuance of an Environmental Compliance Certificate ("**ECC**") for the Dedicated Transmission Facility Project.

Copies of the documents evidencing such submission with the DENR are hereto attached and made an integral part hereof as **Annex "S" and series.**

20. A1E likewise respectfully manifests that it is in the process of securing the following documents pertinent to instant Application:
- 20.1. A1E is currently negotiating with the NGCP regarding the execution of a Connection Agreement with NGCP for the physical interconnection of the generation and connection facilities of the A1E CFPP to NGCP's transmission system. This is pursuant to the approval of the NGCP of the Interconnection Facilities Study as stated in the NGCP's letter dated 11 March 2016.<sup>12</sup>
- 20.2. A1E has determined that the Meralco Industrial Engineering Services Corporation ("**MIESCOR**") is considered a possible contractor to operate and maintain the Dedicated Transmission Facility Project. A1E undertakes to submit an Operations and Maintenance Agreement once it is executed.
- 20.3. A1E is also currently undergoing the bidding process for the Engineering Procurement and Construction ("**EPC**") Contracts and cannot as of yet submit the copies of the EPC Contracts and the Secretary's Certificate containing resolutions of A1E's Board of Directors approving the construction of the transmission line and execution of the EPC.
- 20.4. A1E also undertakes to file an Application for a Certificate of Compliance with this Honorable Commission.
- 20.5. A1E likewise attaches copies of the resolutions issued by the concerned local government units in support of the transmission line project of A1E as **Annexes "T" and series.**

---

<sup>12</sup> Please see **Annex "M"**

**ERC CASE NO. 2016-013 MC**  
**NOTICE OF PUBLIC HEARING/ 18 October 2016**  
**Page 10 of 13**

---

21. A1E hereby undertakes to comply with the provisions of the Philippine Grid Code in relation to the operation of the Dedicated Transmission Facility Project as evidenced by the Statement of Compliance with the Philippine Grid Code, a copy of which is hereto attached and made an integral part hereof as **Annex “U,”** Compliance Plan, a copy of which is hereto attached and made an integral part hereof as **Annex “V”** and the Summary of the Compliance Plan, a copy of which is hereto attached and made an integral part hereof as **Annex “W.”**
22. In summary, A1E hereby submits copies of the following documents, which are either identified as Annexes above or are additional documents in support of the Application:

<b>ANNEX REFERENCE</b>	<b>DOCUMENT</b>
“A”	Certificate of Incorporation
“B”	Articles of Incorporation
“C”	Certificate of Filing of Amended Articles of Incorporation
“D”	Amended Articles of Incorporation
“E”	By-Laws
“F”	General Information Sheet
“G”	Audited Financial Statements
“H”	Project Description
“I”	System Impact Study
“J”	Review of Third Party System Impact Study
“K”	Summary of Connection Options
“L”	NGCP Letter dated 25 August 2015
“M”	NGCP Letter dated 11 March 2016
“N”	Transmission Development Plan
“O”	Project Cost Estimate
“P”	Projected Financial and Economic Cost Analysis
“Q”	Gantt Chart
“R”	Conceptual Engineering Design and Drawings
“S”	Online Application for A1E’s Environmental Compliance Certificate
“T”	Local Government Resolutions in support of instant Application
“U”	A1E Statement of Compliance
“V”	Compliance Plan
“W”	Summary of Compliance Plan
“X”	Department of Energy Power Outlook for 2015-2020
“Y”	Endorsement of the Department of Energy
“Z”	Affidavit in Support of Provisional Authority

**ALLEGATIONS IN SUPPORT OF THE PRAYER FOR  
PROVISIONAL AUTHORITY**

23. Under Rule 14 of the ERC Rules of Practice and Procedures, the Honorable Commission is authorized to issue a provisional authority or interim relief prior to a final decision in the instant Application, provided that the facts and circumstances alleged warrant such remedy.
24. Applicant A1E respectfully submits that the following facts and circumstances clearly warrant the issuance by the Honorable Commission of a provisional authority or interim relief in the instant Application.
- 24.1. The need for the electric power generated by the A1E CFPP is beyond question and a matter that this Honorable Commission may take judicial notice of. Thus it is in the interest of the government to help A1E to achieve commerciality and commence operations at the soonest practicable time. Needless to state, the construction of the dedicated point-to-point transmission facility is a pre-requisite for the testing and commissioning, and ultimately, the commercial operations of A1E CFPP. Thus, a provisional authority urgently needed to prevent the projected insufficiency of electric power in the affected area.
- 24.2. Moreover, the A1E CFPP will utilize high efficiency supercritical-pressure pulverized coal-fired boiler technology that will use coal from Indonesia and/or Australia as main fuel to produce power. State-of-the-art air pollution control devices such as electrostatic precipitator, seawater flue gas desulfurizer, and low NOx burners will be installed in the plant to comply with Philippine DENR standards. The sooner the A1E CFPP is operational, the sooner it can augment existing power supply to the Luzon grid.
- 24.3. To be sure, the issuance of a provisional authority by this Honorable Commission will enable A1E to immediately start with the construction of the transmission facility, thus preventing any delay in the commercial operations of A1E CFPP. In fact, the A1E CFPP is included in the Department of Energy's ("DOE") Power Outlook for 2015-2020 and forms part of the recognized power projects of the DOE as presented to the Senate Committee on Energy.<sup>13</sup>

A copy of the DOE Power Outlook for 2015-2020 is attached hereto as **Annex "X"** as well as the endorsement of the Department of Energy, a copy of

---

<sup>13</sup> Please see Slide No. 9 of **Annex "X"**

which is attached hereto and made an integral part hereof as **Annex "Y."**

A copy of the Affidavit executed by Angelito Lantin and Daniel Neil in support of the prayer for issuance of provisional authority is hereto attached and made an integral part hereof as **Annex "Z."**

- 24.4. Considering the foregoing, there is clear and sufficient basis that the issuance of a provisional authority or interim relief pending the issuance of a final order or decision in the instant Application is imperative.
25. In view of all the foregoing, Applicant respectfully submits the instant Application for the Honorable Commission's urgent and utmost consideration.

#### **PRAYER**

WHEREFORE, premises considered, it is respectfully prayed to the Honorable Commission that:

1. An Order be issued granting provisional authority for the implementation of the development, ownership and/or operation of the dedicated point-to-point facilities by A1E to connect to the transmission system of NGCP; and
2. After hearing on the merits, a Decision be rendered approving the instant Application.

Other reliefs just and equitable under the foregoing premises are likewise prayed for.

The Commission has set the Joint Application for initial hearing, expository presentation, pre-trial conference and evidentiary hearing on **29 November 2016 (Tuesday) at ten o'clock in the morning (10:00 A.M.) at ERC Hearing Room, 15<sup>th</sup> Floor, Pacific Center Building, San Miguel Avenue, Pasig City.**

All persons who have an interest in the subject matter of the proceeding may become a party by filing, at least five (5) days prior to the initial hearing and subject to the requirements in the ERC's Rules of Practice and Procedure, a verified petition with the Commission giving the docket number and title of the proceeding and stating: (1) the petitioner's name and address; (2) the nature of petitioner's interest in the subject matter of the proceeding, and the way and manner in which such interest is affected by the issues involved in the proceeding; and (3) a statement of the relief desired.


**ERC CASE NO. 2016-013 MC**  
**NOTICE OF PUBLIC HEARING/ 18 October 2016**  
**Page 13 of 13**

---

All other persons who may want their views known to the Commission with respect to the subject matter of the proceeding may file their opposition to the Application or comment thereon at any stage of the proceeding before the Applicants conclude the presentation of their evidence. No particular form of opposition or comment is required, but the document, letter or writing should contain the name and address of such person and a concise statement of the opposition or comment and the grounds relied upon.

All such persons who wish to have a copy of the Application may request from the Applicants that they be furnished with the same, prior to the date of the initial hearing. The Applicants are hereby directed to furnish all those making such request with copies of the Application and its attachments, subject to the reimbursement of reasonable photocopying costs. Any such person may likewise examine the Application and other pertinent records filed with the Commission during the standard office hours.

**WITNESS**, the Honorable Chairman **JOSE VICENTE B. SALAZAR**, and the Honorable Commissioners **ALFREDO J. NON**, **GLORIA VICTORIA C. YAP-TARUC**, **JOSEFINA PATRICIA A. MAGPALE-ASIRIT**, and **GERONIMO D. STA. ANA**, **Energy Regulatory Commission**, this 18<sup>th</sup> day of October 2016 in Pasig City.

  
**ATTY. NATHAN J. MARASIGAN**  
*Chief of Staff*  
Office of the Chairman and CEO